

IPRO Copy+*

- Bates™ Labeling
- Copy, Image, Print, and OCR at the same time



TWAIN Version

IPRO Tech understands the wide range of copying challenges facing clients today. Because of this, IPRO Tech has developed IPRO Copy+, a flexible solution that simplifies complex copying tasks. It creates both paper copies and document images in one step. The solution brings great value to both entry-level and production-level copy operations. It is easy to implement and use, and it increases the efficiency of copy operations by automating many manual steps in the copy process.

COPY+ KEY FEATURES

Scan and Capture

- Scans and captures from a multifunction digital copier
- Scans and prints at the same time
- Captures binding elements for easy assembly and reprinting
- Captures folder names and document descriptions
- Scans color documents and integrates them into the collection
- Imports TIFF, PDF, and JPG images
- Scans and prints documents in color
- Scans open books on the glass and Bates number pages
- Performs automatic black border removal

Transformation

- Add, match, and customize Image Keys easily
- Add a Static Post Suffix to describe the suffix
- Provides flexible Bates label formats
- Bates labels in 6 locations at the top and bottom of the page
- Provides easy Bates renumbering
- Creates TIFF and PDF formats
- Creates OCR results
- Utilizes Adobe technology for PDFs

Print and View

- Perform Quality Control, despeckle, and deskew documents prior to printing
- Rotates and reorders pages prior to printing
- Reprints pages, documents or collections from a CD, DVD, or hard disk
- Includes IPublish Viewer 8.5 (runtime) with each export CD and DVD, free of charge

Store and Report

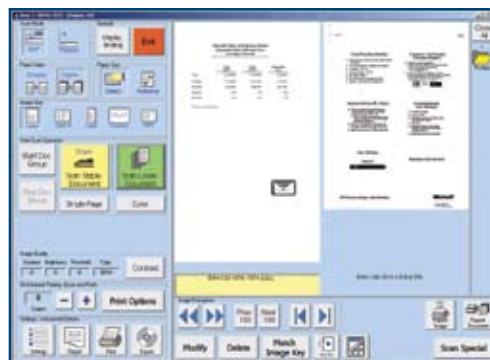
- Stores document images on CD, DVD, hard disk, or USB drive
- PDF JBIG compression
- Creates Manifest Reports and Job Cost Reports

Cost Recovery

- Supports nQueue® and Equitrac® cost recovery applications

System Overview

The IPRO Copy+ solution allows an operator to manage the copy process via a touch screen and a streamline user interface. With IPRO Copy+, an operator can rapidly copy, image, Bates™ number, and OCR legal documents in one step. The process is simple, intuitive, and mimics the copy process. The operator can utilize advance pre-printing features for quality assurance to guarantee the readability of a document. Plus, produce PDF and TIFF formats, OCR results, Manifest Reports and Job Costing Reports.



Touch Screen User Interface - Easy to use controls enable the Copy+ operator to preview, number, categorize and save documents quickly.



Cost Effective: IPRO Copy+ is a PC-based application that utilizes the functionality of a multifunction digital copier (MFD). IPRO Copy+ does not require expensive imaging equipment or expensive technical staff. It also reduces operational staff by automating many copy functions. Plus nQueue® and Equitrac® cost recovery applications are supported.

Easy to Use: Operationally, IPRO Copy+ is very similar to the copy process and requires little training to use. It allows clients to copy documents and create document images in one step with little change to the existing copy process. IPRO Copy+ utilizes a touch screen to create document copies and document images, perform Bates™ numbering and renumbering, capture binding element information, perform real-time quality control, reprint collections (blowbacks), and store document images electronically. IPRO Copy+ also allows the operator to export documents as TIFF or PDF images. It also produces OCR files, which can be used by other applications, such as the IPublish Viewer.

Increase Effectiveness: Because documents can be imaged and OCR'd at scan time, the end user can take advantage of advanced search and retrieval capability for all copied documents. Additionally, document pages can be quickly reordered and renumbered with the touch of a button, and pages can be reviewed for quality prior to printing.

Improved Client Retention: IPRO Copy+ delivers a high quality product to the end user. It gives the end user a paper copy of the collection plus an electronic version, which can be searched and annotated. The electronic version (CD, DVD or hard disk) also facilitates quick and easy reprinting of the collection with all the binding element information preserved.

Reduce Costly Rework: Document images can be reviewed for quality and remedied prior to printing. Bates numbers can be renumbered with the touch of a button, and image collections can be reprinted from a CD/DVD.





IPro Copy+ Details & Specifications

Supported Multifunction
Digital Copiers

Canon®

105	7200
5570/6570	8500
6020/5020	8070/9070
7105/7095/7086	

Gestetner®

10512	DSm660
6002	DSm675
7502	DSm725
9002	DSm730
DSm622	DSm735
DSm627	DSm745
DSm635	DSm790
DSm645	DSm7110
DSm651	DSm7135

Konica® Minolta®

1050 Bizhub

Lanier®

LD0105	LD160
LD060	LD175
LD075	LD190
LD090	LD225
LD122	LD230
LD127	LD235
LD135	LD245
LD145	LD1110
LD151	LD1135

Ricoh Aficio®

1060	2090
1075	2105
2022	3025
2027	3030
2035	3035
2045	3045
2051	MP9000
2060	MP1110
2075	MP1350

Savin®

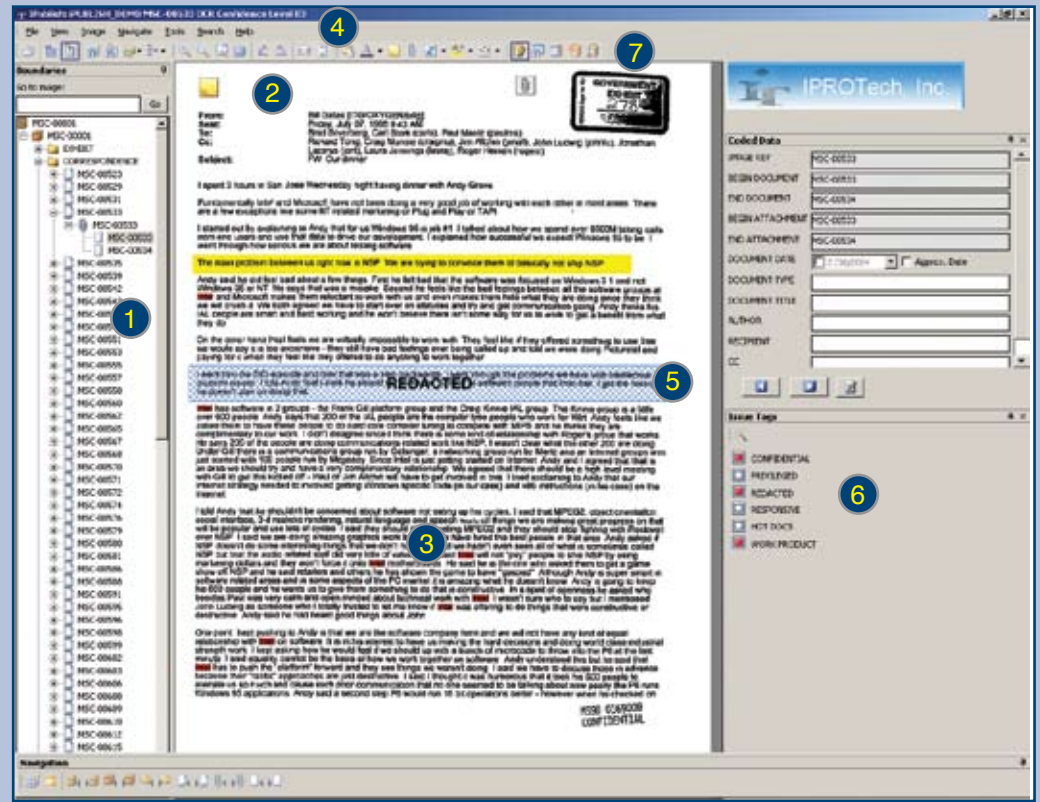
2560	4060
2575	4075
4105	8035
4090	8045
4022	8025
4027	8030
4035	8090
4045	8110
4051	8135

Toshiba®

900	1050
901/1101/1351	

Note: New Multifunction Digital Copiers are being added to this list on a regular basis. Please visit IPro Tech's website for the most current list at www.iprotech.com

IPublish Viewer™ - Free with Each IPro Copy+ Export CD/DVD



- 1. Graphical Interface** - View document boundaries
- 2. Search Documents** - Full text search capability for text and sticky notes
- 3. OCR** - View OCR search results
- 4. OCR Confidence Levels** - View the accuracy of the OCR text
- 5. Redactions** - Full mask, cross hatch, or no fill (Outlined) redaction options
- 6. View Issue Tags** - Apply user-defined issue tags
- 7. Coding** - Set up database fields, enter coding data, query the coding database, and perform full text searches on the coded data

Recommended System Configuration

PC System

- Pentium 4 Processor
- 3.0 GHz/800FSB
- 512 Cache
- Hyper-Threading
- Memory 1GB, 400Mhz
- Keyboard and Mouse
- Removable Media
- CD/RW and/or DVD/RW Combo
- Graphic Card 64MD, nVidia
- Integrated Intel Gigabit Adapter (NIC) (10/100/1000)

Operating System

- XP Professional
- Hyper-Threading feature preset to "ON"

Touch Screen Monitor

- 15-inch Flat Panel Touch Screen

Cart to Accommodate the PC and Touchscreen



9630 NORTH 25TH AVE, SUITE 450 PHOENIX, AZ 85021